

Does an increase in promotion of health inequalities training have the potential to reduce gaps in health inequalities?



Problem

Health inequalities are now widely recognised as a problem in society. Healthcare has a role in this. But even now, many people working in primary care know nothing about it – so how can we change this?

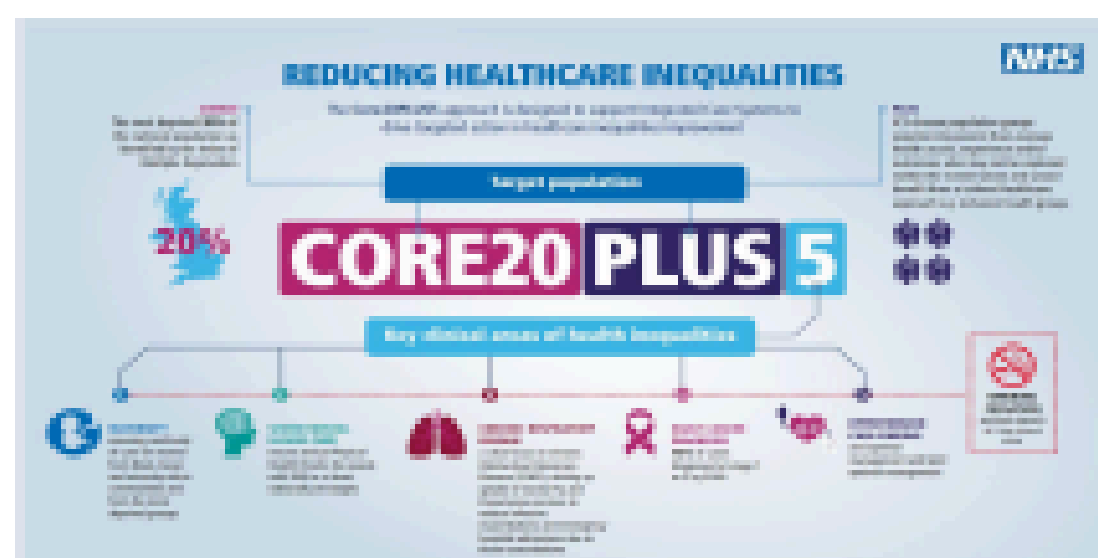


Project Aim

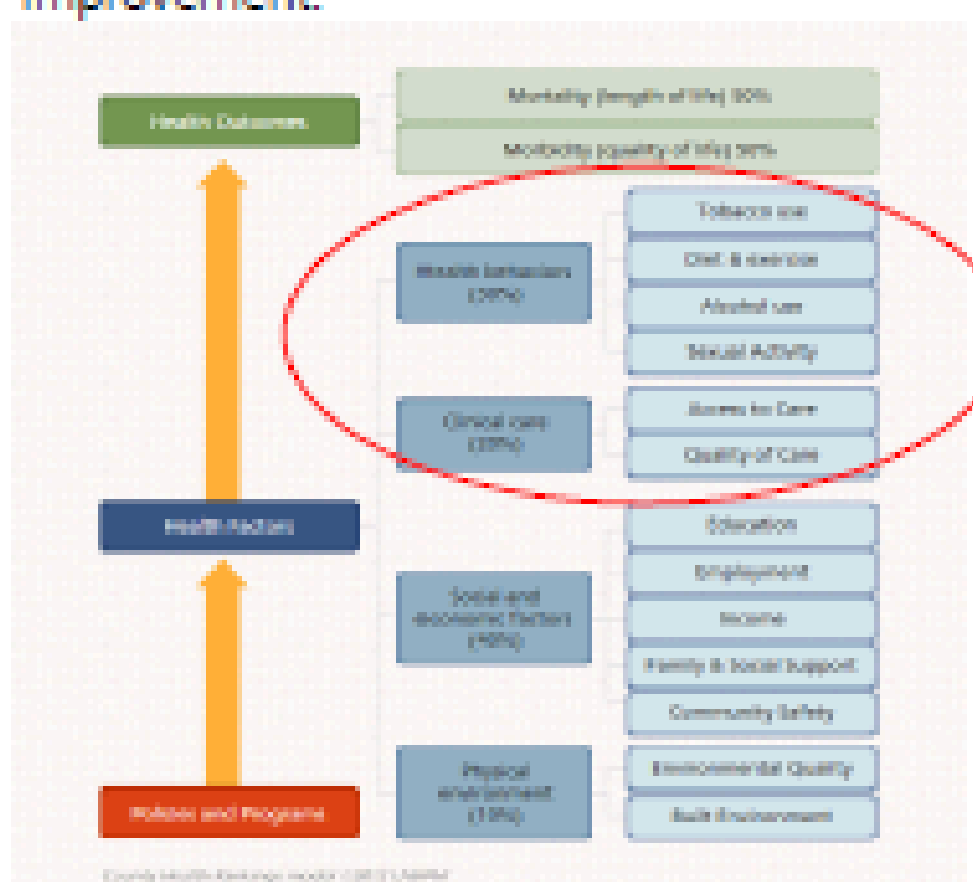
To assess awareness of current health inequalities training and create better health inequalities training in Derbyshire

BACKGROUND

Health inequalities are "differences in health across the population, and between different groups in society, that are systematic, unfair and avoidable"¹.



Core20PLUS5 is a national NHS England approach to support the reduction of health inequalities at both national and system level. The approach defines a target population cohort and identifies '5' focus clinical areas requiring accelerated improvement.²



Primary care has influence in 50% of the contributing factors through clinical care, access to care, health promotion and disease prevention³.

Life expectancy (years)	Male	Female
National	78.5-83.2	78.3-86.3
Derby City	77.5	81.6
Derbs. County	79.1	82.4

Table showing life expectancy variation across the country – between the most and least deprived areas^{4,5,6}

What did we initially find?

Derby & Derbyshire Health Inequalities Quality Improvement Questionnaire

- 31 respondents across Derby City, Derbyshire North and South
- 65% were non-clinical staff
- The average confidence in their understanding of health inequalities was 3.8 out of 5 (1 low, 5 high)
- 48% had never done any formal health inequalities training
- Only 29% had heard of Core20PLUS5

The Process



Session 1:

- Confidence (out of 5) in understanding of health inequalities increased from a mean of 2.75 to 4.44 (62% increase).

Session 2:

- Confidence (out of 5) in understanding of health inequalities increased from a mean of 2.05 to 4.03 (97% increase)

50% of attendees across the two face-to-face sessions reported intent to change their practice as a result of the session

Conclusion and Reflection

- Basic educational session "Introduction to Health Inequalities" can have a significant impact on primary care professionals understanding and awareness of health inequalities
- There is potential for an increase in promotion of health inequalities training to begin to reduce gaps in inequalities.
- There was not enough time during the fellowship to evaluate whether colleagues who underwent training will implement change in their practice following the session

Recommendation

More funding should be available to allow face-to-face teaching on health inequalities to continue in the future.

References

- NICE and health inequalities. National Institute for Health and Care Excellence. Updated: not known. Available at: <https://www.nice.org.uk/about/what-we-do/our-and-health-inequalities> (Accessed: December 2023).
- Core20PLUS5 (adults) – an approach to reducing healthcare inequalities. NHS England. Updated: not known. Available at: <https://www.england.nhs.uk/about/equality/equality-hub/national-healthcare-inequalities-improvement-programme/core20plus5/> (Accessed: December 2023).
- Healthy Lives Resources Guide. The Health Foundation. Updated: January 2017. Available at: <https://www.health.org.uk/sites/default/files/HealthyLivesResourcesGuide.pdf> (Accessed: December 2023).
- What is happening to life expectancy in England? The King's Fund. Updated: 10/08/2023. Available at: <https://www.kingsfund.org.uk/insight-and-analysis/long-reads/what-is-happening-life-expectancy-england> (Accessed: December 2023).
- Local Authority Health Profiles. Fingertips, Public Health Data. Updated: not known. Available at: <https://fingertips.phe.org.uk/profile/health-profiles/data/page/1/lat/203/area/500000015> (Accessed: December 2023).
- Local Authority Health Profiles. Fingertips, Public Health Data. Updated: not known. Available at: <https://fingertips.phe.org.uk/profile/health-profiles/data/page/1/lat/203/area/500000007> (Accessed: December 2023).

Dr Allie Hill, GP

Derbyshire Health Inequalities Fellow 2023